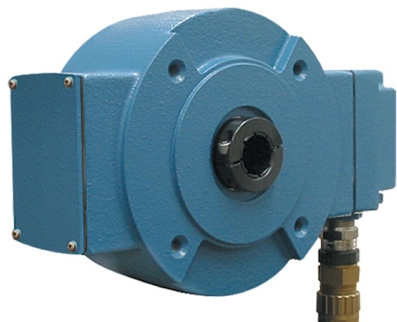


Avtron M7 Ultra-Low Temperature Encoders



Severe Duty Hollow Shaft Mount Ultra-Low Temperature Magnetic Encoder, 1" to 1 1/8"

Magnetic Durability in a Compact Encoder

Heavy, Mill Duty

Up to 1200 PPR -45°C to +80°C
Operation

Immune to water, oil, dust, dirt, etc.

Withstands extreme shock and
vibration

Extra heavy-duty bearings

Optional dual isolated outputs

Excellent for oil drilling and gas
pipeline applications

M7

Avtron M7 Hollow Shaft Magnetic Hollow Shaft Mount Encoder, 1" to 1 1/8"

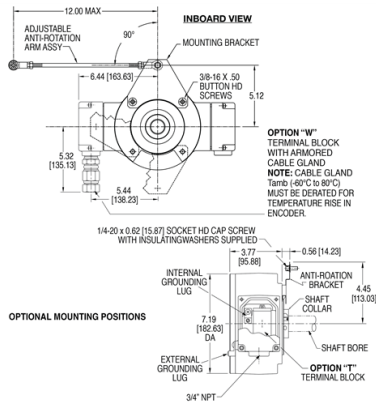
M7-4 and M7-5 heavy mill duty encoders are designed for direct mounting on motor or load shafts, from 1" to 1 1/8".

Forget fragile glass disk encoders! The M7 features Avtron's rugged magnetic sensor and solid metal rotor technology. Our shatterproof, moisture proof systems ensure your application has maximum uptime.

No more tiny stub shafts on big motors or load shafts! The hollow shaft (tethered) models offer direct mounting on big shafts, from 1" to 1 1/8", without flanges, reducers, couplings, or other hardware. No rework is needed; just mount the encoder directly on the shaft, and secure the tether arm. The heavy duty bearings withstand runout and vibration that destroy lesser encoders.

If you have a rough application in a cold location, select an M7 encoder!

OUTLINE DRAWING



MORE M7 ADVANTAGES

- Threaded rod torque arm for easy tethered mounting
- Highly resistant to electrical and magnetic motor and brake noise
- Second isolated output may be different PPR
- Available armored wire gland
- IP66 Enclosure
- 1 Year No-Hassle Warranty

MORE M7 SPECIFICATIONS

Operating Power:

Volts: 5-24 VDC;

Current: 120mA per output, no load 24VDC

770mA @24VDC heater current required for operation below -

40°C

Output Format: A,/A, B,/B; Optional Marker Z,/Z

Frequency Range: 0 to 100 kHz

PPR: 240-1200

Speed: 5000 RPM Max. Std., 1" to 1 1/8" shaft

Temperature: 80°C to -45°C (internal heater operation required below -40°C)

Chemical: Polyurethane enamel paint protects against salt spray, mild acids, and bases

Weight: 16 lbs./7kg.

All dimensions are in inches [millimeters].

Specifications and features are subject to change without notice.

Check out our website for more detailed specifications, drawings, and installation instructions. www.avtronencoders.com

SELECTION GUIDE

<input type="checkbox"/>	<input type="checkbox"/>	<input type="checkbox"/>	<input type="checkbox"/>	<input type="checkbox"/>	<input type="checkbox"/>	<input type="checkbox"/>	<input type="checkbox"/>	<input type="checkbox"/>	<input type="checkbox"/>
MODEL	HOLLOW SHAFT BORE SIZE	MOUNTING	LINE DRIVER	LEFT OUTPUT	RIGHT OUTPUT	BASE PPR	MARKER	CONNECTOR OPTIONS	MODIFICATIONS
M7-	4 - 1" Hollow Shaft 5 - 1-1/8" Hollow Shaft	S - Standard End-of-Shaft Mounting	1 - 5-24 V In/Out 2 - 5-18V In/Out 3 - 12-24V In/Out	X - No Left Output L - Low Res. M - Medium Res. H - High Res.	X - No Right Output L - Low Res. M - Medium Res. H - High Res.	48 - 480 PPR 51 - 512 PPR 60 - 600 PPR	- - No Marker Z - Marker	T - Terminal Block W - Terminal w/ Cable Gland	000 - No Options, No Torque Arm Kit 003 - B28390 Torque Arm Kit for all M7 encoders